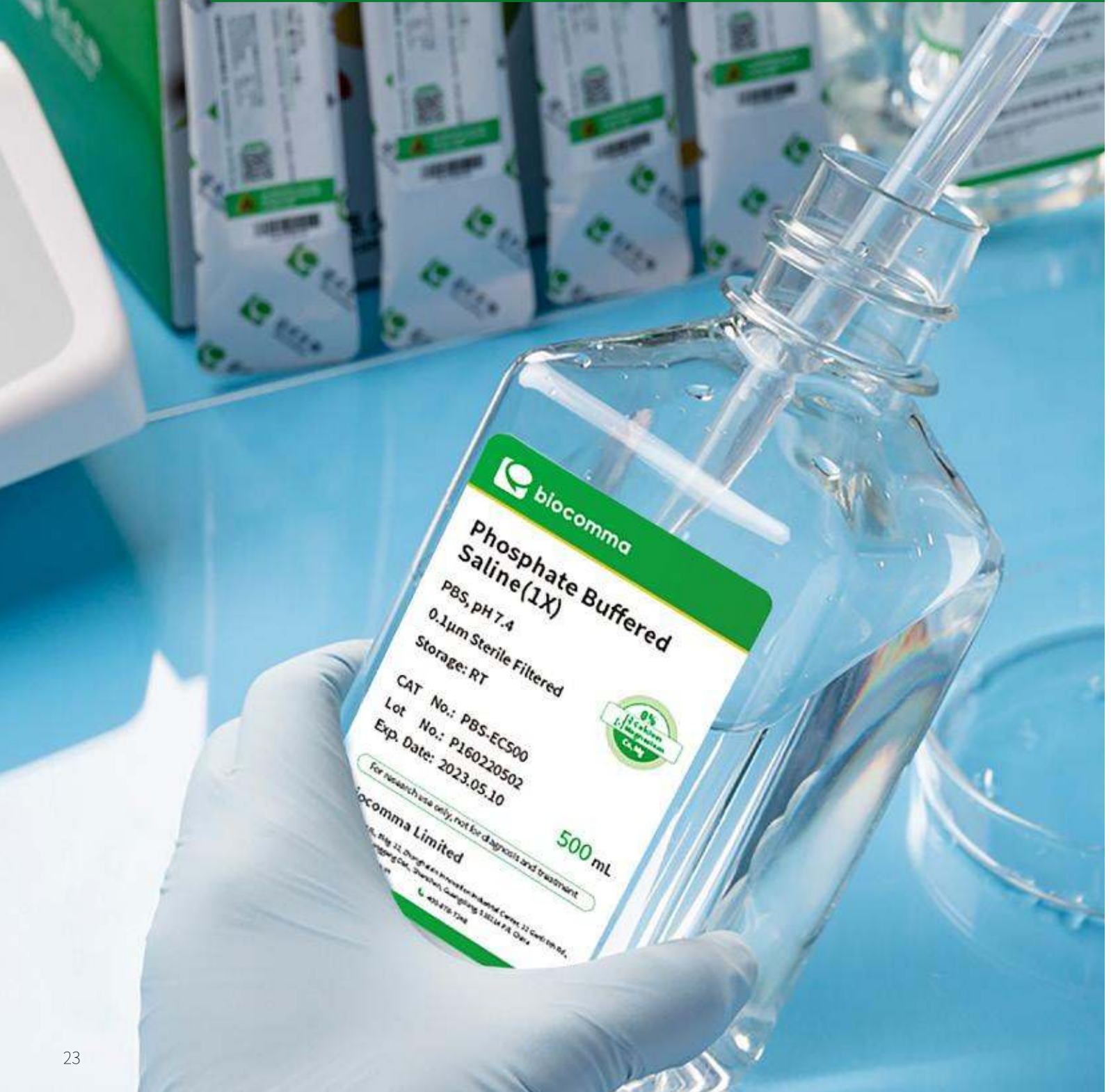


# 03

## READY TO USE LABORATORY REAGENTS



## Biological Buffers

biocomma® Biological Buffers have a complete range and accurate quantification, which are ideal reagent for standard biological experiments. The biological buffers can be applied to cell culture, immunohistochemistry (IHC), Western Blot, enzyme-linked immunosorbent assay (ELISA), in situ hybridization, immunodetection washing solutions, antibody dilutions, and molecular cloning fields.

### Features

- **Convenience:** Ready-to-use, no configuration required, sterilized by 0.1 µm filtration
- **Professional:** Professional production technology, completely mixed, GMP standard, traceable throughout the process
- **Reproducibility:** Small batch-to-batch variation
- **Stable:** Provide solution stability



### Ordering Information

Category	Cat. #	Description	Qty.
PBS	PBS-EC500	PBS Buffer, pH 7.4, 1×	500mL
	PBS-EC510	PBS Buffer, pH 7.4, 10×	500mL
	PBS-EC520	PBS Buffer, pH 7.4, 20×	500mL
PBST	PBST-E500	PBS Tween-20 Buffer, 1×	500mL
	PBST-E510	PBS Tween-20 Buffer, 10×	500mL
DPBS	DPBS-E500	DPBS Buffer, no calcium, no magnesium, 1×	500mL
	DPBS-E500-CM	DPBS Buffer, calcium, magnesium, 1×	500mL
TBS	TBS-E500	TBS Buffer, 1×	500mL
	TBS-E510	TBS Buffer, 10×	500mL
	TBS-E520	TBS Buffer, 20×	500mL
TBST	TBST-E500	TBS Tween-20 Buffer, 1×	500mL
	TBST-E510	TBS Tween-20 Buffer, 10×	500mL
	TBST-E520	TBS Tween-20 Buffer, 20×	500mL
TG	TG-E500	Tris-Glycine Buffer, 1×	500mL
	TG-E510	Tris-Glycine Buffer, 10×	500mL
TE	TE-E500	Tris-EDTA Buffer, 1×	500mL
	TE-E510	Tris-EDTA Buffer, 10×	500mL
	TE-E520	Tris-EDTA Buffer, 20×	500mL
TGS	TGS-E500	Tris-Glycine SDS Buffer, 1×	500mL
	TGS-E510	Tris-Glycine SDS Buffer, 10×	500mL
WTB	WTB-E500	Western Transfer Buffer, 1×	500mL
	WTB-E510	Western Transfer Buffer, 10×	500mL
	WTB-E520	Western Transfer Buffer, 20×	500mL

## Phosphate Buffered Saline (PBS) Powder

biocomma® PBS Powder has stable quality and good batch-to-batch variation to meet the large quantities needs of laboratories.

### Ordering Information

Cat. #	Description	Qty
PBS-50	PBS: 10mM Phosphate, 137 mM NaCl, 2.7 mM KCl, pH 7.4	1 L × 50 Pcs/PK
PBST-50	PBS buffer with Tween-20: 10 Mm Phosphate, 137 Mm NaCl, 2.7mM KCl 0.05% Tween-20,pH 7.4	1 L × 50 Pcs/PK
DPBS-50	DPBS Buffer: 10 mM Phosphate, 138mM NaCl, 2.67 mM KCl, pH 7.4	1 L × 50 Pcs/PK
TBS-50	TBS Buffer: 50mM Tris-HCl, 138 mM NaCl, 2.7 mM KCl, pH 8.0	1 L × 50 Pcs/PK
TBST-50	TBS Buffer with Tween-20: 50 mM Tris-HCl, 138 mM NaCl, 2.7 mM KCl, 0.05% Tween-20, pH 8.0	1 L × 50 Pcs/PK
TG-50	Tris-Glycine Buffer: 25 mM Tris, 192 mM Glycine	1 L × 50 Pcs/PK
TGS-50	Tris-Glycine-SDS Buffer: 25 mM Tris, 192 mM Glycine, 0.1%SDS	1 L × 50 Pcs/PK
TBE-50	Tris-Borate Buffer: 89 mM Tris-Borate, 2 mM EDTA	1 L × 50 Pcs/PK
MOPS-50	Tris-MOPS-SDS Buffer: 50 mM MOPS, 50 mM Tris, 0.1% SDS, 1 mM EDTA	1 L × 50 Pcs/PK
MES-50	Tris-MES-SDS Buffer: 50 mM MES, 50 mM Tris, 0.1% SDS, 1 mM EDTA	1 L × 50 Pcs/PK
WTB-50	Western Blot Transfer Buffer: 48 mM Tris, 39 mM Glycine,1.2 mM SDS	1 L × 50 Pcs/PK
TE-50	Tris-EDTA Buffer: 100 mM Tris-HCl, 10 mM EDTA, pH7.4	1 L × 50 Pcs/PK
EB-50	EDTA Buffer (pH8.0): 50 mM EDTA, pH8.0	1 L × 50 Pcs/PK
SCC-50	SSC Buffer: 300 mM NaCl, 30 mM Trisodium citrate, pH7.0	1 L × 50 Pcs/PK
SCB-50	Citrate Buffer: 0.1M Citrate, pH 6.0 (Antigen Retrieval Reagent)	1 L × 50 Pcs/PK



# Cell Culture Medium

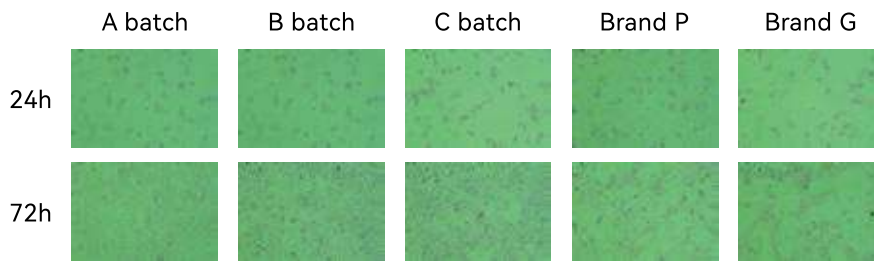
biocomma® Cell Culture Medium contains amino acids, carbohydrates, vitamins, inorganic salt ions and other nutrients required for best cell growth state. The complete product range is suitable for the in vitro culture of various suspension and adherent mammalian cells, which is a standard medium for cell culture experiments.



## Features

- **Stable:** All raw materials are strictly screened, one-time bulk purchase.
- **Convenient:** Ready to use
- **Quality Control:** Each batch undergoes strict quality inspection to achieve traceability
- **Professional:** Years of R&D and production experience, ISO9001 certified and GMP standard

### Comparison between different batches of Biocomma DMEM/F-12 medium and competitors' medium in culturing TM4 cells:



## Ordering Information

Cat.#	Description	Qty.
CM-RPM-E	RPMI 1640 Medium (1×)	500 mL
CM-RPM-E1	RPMI 1640 Medium (1×)	10x500 mL
CM-DMH-E	DMEM, High Glucose (1×)	500 mL
CM-DMH-E1	DMEM, High Glucose (1×)	10x500 mL
CM-DMF-E	DMEM/F-12 (1:1) (1×)	500 mL
CM-DMF-E1	DMEM/F-12 (1:1) (1×)	10x500 mL
CM-MEM-E	MEM (1×)	500 mL
CM-MEM-E1	MEM (1×)	10x500 mL

# Gram Stain

## Application

Staining of fixed cells of microorganisms with special dyes

## Components

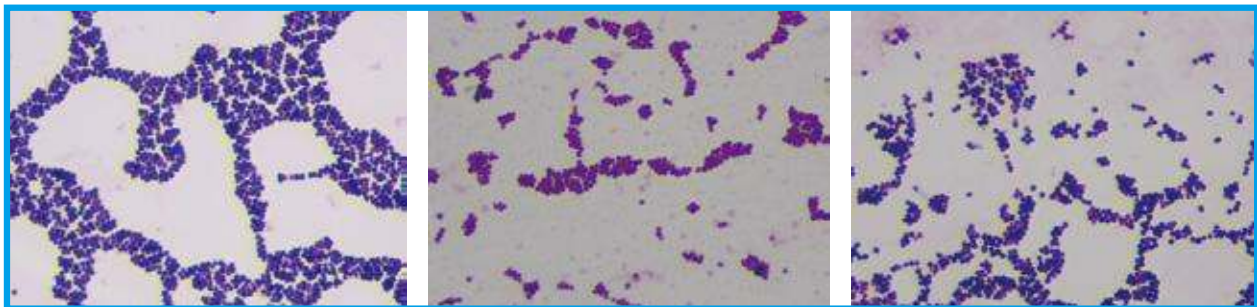
Crystal Violet, Iodine Solution, Decolorizer and Safranin Solution



## Features

- Obvious contrast between Gram positive and negative
- The bottles prevent diffusion of iodine in the bottle

## Results



Staphylococcus Aureus

Escherichia Coli

Staphylococcus Aureus

## Ordering Information

Cat.#	Description	Qty.
GS01E	Gram Stain Kit: Crystal Violet, Iodine Solution, Decolorizer and Safranin Solution	4 X 20 mL/Box
GS02E	Gram Stain Kit: Crystal Violet, Iodine Solution, Decolorizer and Safranin Solution	4 X 50 mL/Box